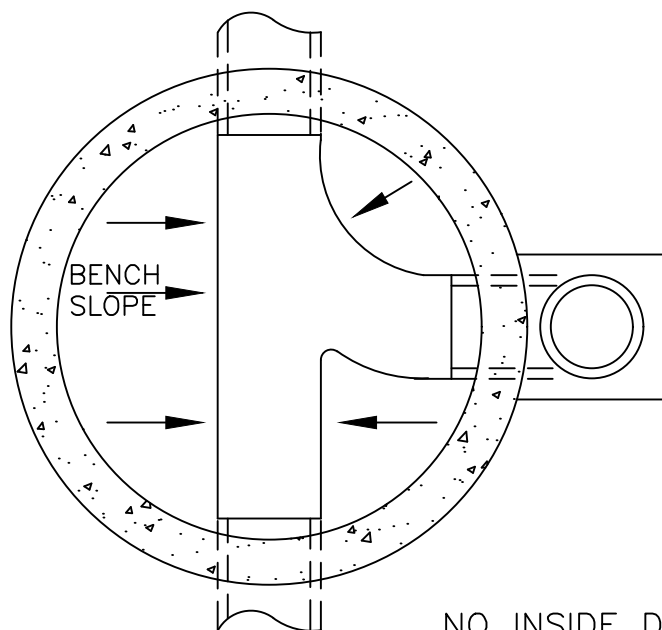
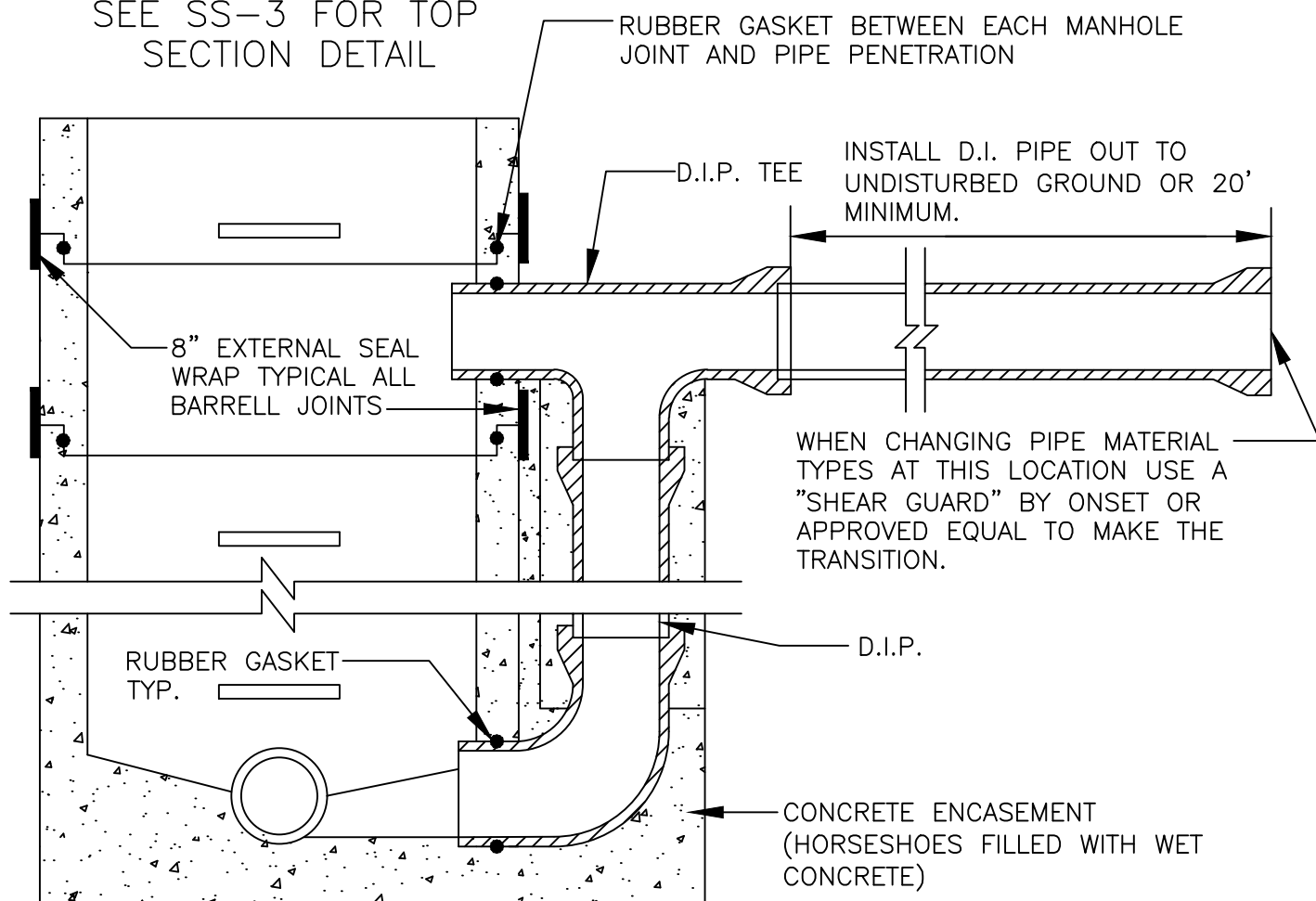


SEE SS-3 FOR TOP
SECTION DETAIL



NOTE:

THE TOP OF THE DROP PIPE SHALL BE EQUAL TO OR ABOVE THE TOP OF THE OUTLET PIPE. IF THE OUTLET PIPE IS MORE THAN TWICE THE DIA. OF THE DROP PIPE, THEN THE FLOW LINE OF THE DROP PIPE SHALL BE EQUAL OR ABOVE THE SPRING LINE OF THE OUTLET PIPE.

NO INSIDE DROPS ALLOWED



STANDARD DETAILS
STANDARD DROP MANHOLE #2
CITY OF PLYMOUTH

PUBLISHED
3-25

CITY PL. NO.
SS-5
REVISED 1-17