

Quaking Aspen
Populus tremuloides



Mature



Native Range

General Attributes

| | |
|-----------------|-----------------|
| Type | Deciduous Tree |
| Height | 35 - 60 Feet |
| Spread | 20 - 30 Feet |
| Form | Columnar |
| Utility Lines | Incompatible |
| Growth Rate | Fast |
| Life Expectancy | Short |
| USDA Zone | 2 - 6 |
| Root Pattern | Shallow Lateral |

Flowers/Foliage/Fruits

| | |
|----------------|----------------|
| Flower Color | Gray |
| Flower Season | Spring |
| Fruit | Capsule |
| Fruit Color | |
| Fruit Season | Spring |
| Summer Texture | Medium |
| Winter Texture | Medium |
| Spring Foliage | Green |
| Summer Foliage | Green |
| Fall Foliage | Yellow |
| Winter Foliage | Not Applicable |

Plant Community

| | |
|-----------------|--|
| Sun | Full Sun |
| Orientation | North, East |
| Soil Texture | Sand to Clay |
| Topography | Upland |
| Plant Community | Forest, Savannah, Forest Edge, Old Field |
| Succession | Pioneer |
| Origin | MSA Zone 1, MSA Zone 2, MSA Zone 3, MSA Zone 4, MSA Zone 5, MSA Zone 6, Minnesota, North America |

Soils

| | |
|----------------------|---------------------|
| Salt Spray Tolerance | Moderate |
| Soil Salt Tolerance | Tolerant |
| Compaction Tolerance | Tolerant |
| Water Table | 12 Inches |
| Drainage | Excessive, Moderate |
| Flood Tolerance | |
| Drought Tolerance | |
| Moisture Regime | Dry, Moist, Wet |
| pH | 4.8 through 7.5 |
| Windbreak Group | |

Quaking Aspen
Populus tremuloides



Planting Ease

| | |
|------------------|------|
| Spring Bareroot | Easy |
| Fall Bareroot | Easy |
| Spring Container | Easy |
| Fall Container | Easy |
| Spring Seed | |
| Fall Seed | |

Maintenance

| | |
|----------------------|-----------|
| Formal | Moderate |
| Informal | Low |
| 2,4-D Tolerance | Sensitive |
| Dicamba Tolerance | Sensitive |
| Picloram Tolerance | Sensitive |
| Clopyralid Tolerance | |
| Artificial Light | Sensitive |
| Sulfur Dioxide | Sensitive |
| Ozone Tolerance | Sensitive |
| Hydrogen Flouride | Moderate |
| Nitrogen Oxide | |

Pests/Problems

| | |
|--------------------|--------------------|
| Allergens | males 9, females 1 |
| Invasiveness | Invasive |
| Toxicity | |
| Cold Injury | Not Susceptible |
| Storm Damage | Susceptible |
| Biological Control | |
| Mechanical Control | |
| Chemical Control | |

Miscellaneous

| | |
|-------------------|-------|
| Wildlife Rating | High |
| Insect Concerns | Major |
| Disease Concern | Major |
| Wildlife Concerns | |

Comments

Native species that reseeds itself after forest fires. Wood used for paper pulp and furniture; bark favored by beavers. Good in naturalistic plantings. Plant named because leaves quake in wind. Bark greenish to white. Subject to canker.



Bark



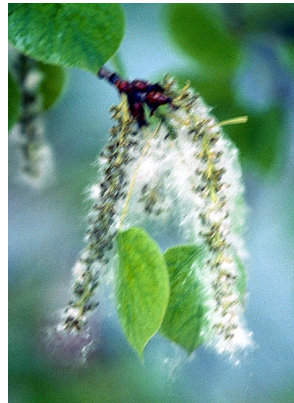
Fall

Quaking Aspen

Populus tremuloides



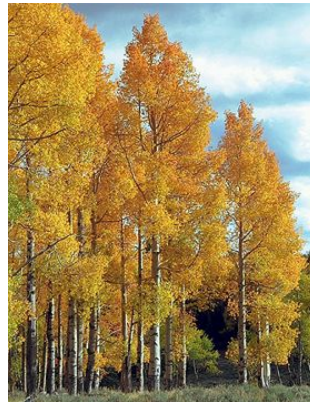
Flower



Fruit



Leaf



Mass